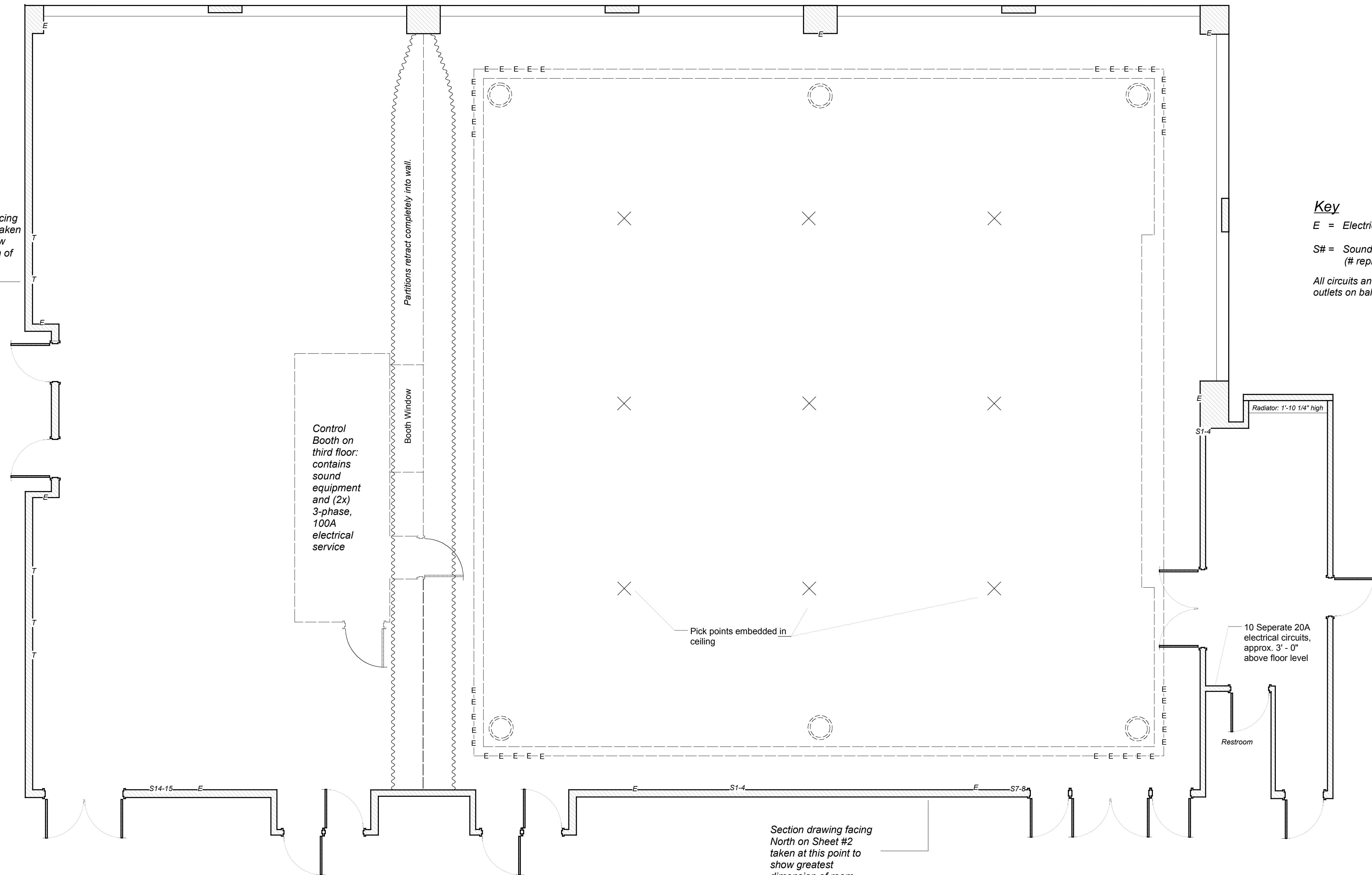


Section drawing facing East on Sheet #2 taken at this point to show greatest dimension of room.

Key
 E = Electrical outlet
 L# = Lighting circuit (# represents circuit number)
 S# = Sound circuit (# represents circuit number)
 T = Telephone Jack
 All circuits and outlets at floor level unless otherwise noted, except electrical outlets on balcony which are 3' - 0" off the floor.



| | |
|---|-----------------------|
| The John J. Louis Room | |
| Norris University Center: Northwestern University | |
| Drafted by Benjamin Wilhelm | Scale: 1/4" = 1' - 0" |
| Last Updated: 6/6/03 | Sheet #1 of 2 |